



DuPont™ RainVent™ Batten Installation Guidelines

TO IMPROVE THE VENTILATION AND DRAINING SPACE
BEHIND A CLADDING SYSTEM OR 3-COAT STUCCO SYSTEM
IN RESIDENTIAL CONSTRUCTION



DuPont™ RainVent™ Batten Installation Guidelines

The DuPont™ RainVent™ Batten is intended for use on stud walls with studs spaced at 16" or less and OSB or plywood sheathing.

Battens:

The DuPont™ RainVent™ Batten is a polypropylene corrugated batten product with flow through ventilation channels installed between the control layer and the siding/stucco system. The battens are 3/8" thick, 1-5/8" wide and 8' long.

Wall Preparation:

Apply DuPont™ Tyvek® weather resistive barrier to sheathing installed by a DuPont™ Certified Installer or follow the *DuPont™ Tyvek® Water-Resistive and Air Barriers Installation Guidelines* (K-16282).

Where insulation is provided on the exterior face of the OSB/plywood sheathing, a maximum of 1" thick code compliant insulation board shall be used and it shall be installed in accordance with the manufacturers recommendations. It is recommended to use DuPont™ Tyvek® DrainWrap® between foam and sheathing.

DuPont™ RainVent™ Batten Installation:

Installations over 1/2" OSB or plywood intended for wood or cement cladding (Diagram 1)

- Place the battens over DuPont™ Tyvek® at 16" on center and align with the wall studs. Secure DuPont™ RainVent™ Battens in place with 1" crown, 1-1/4" long staples at 16" on center or other approved fasteners capable of penetrating the studs by 1/2".

Installations over 1" insulation intended for wood or cement cladding (Diagram 2)

- Place DuPont™ Tyvek® DrainWrap® between sheathing and foam. Place battens on foam, and install siding.

Installations over 1" insulation intended for stucco (Diagram 3)

- Place the DuPont™ RainVent™ Battens over DuPont™ Tyvek® at 8" on center with every other batten aligned with the wall studs. Secure battens in place with 2" x 0.120" shank diameter galvanized roofing nails at 16" on center.
- Install a layer of DuPont™ Tyvek® HomeWrap® over the DuPont™ RainVent™ Battens and secure with staples or other approved fasteners. (This will prevent the scratch coat from blocking the drainage space created by the battens. It is not critical to secure the cover sheet to the sheathing aggressively as the lath will be secured through all layers to the sheathing).

Siding Installation:

Wood or cement cladding (Diagram 1 and 2)

Wood siding or cement cladding shall be installed in accordance with the manufacturer's recommendations.

Note – Engineered values are based on 8" wide HardiePlank™ lap siding (ESR-2290) with 8d nails used for systems without insulation and 16d nails used for systems with insulation. All nails were installed using predrilled holes in the siding. Nails were installed at the "overlap" and spaced at 16" on center horizontally.

Stucco Siding (Diagram 3)

Prior to installation of stucco, a self furred expanded metal lath (2.5 lbs/yd) shall be attached to the studs using 3" long x 0.120" shank diameter galvanized roofing nails (head diameter of 0.4") at 6" on center.

3-coat stucco system shall be installed in accordance with manufacturer's recommendations and the requirements of ASTM C-926.

Note – Engineered values are based on a system consisting of 3 parts sand to 1 part cement and a water to cement ratio of 0.3.

Windows and Trim

- Secure additional DuPont™ RainVent™ Battens behind corner trim, and vertical window trim.
- Attach battens one inch away from window frame for air/water channel behind trim.
- Integrate an insect screen behind the horizontal window trim pieces by attaching a 6 inch wide strip of galvanized or fiberglass insect screen along both the top and bottom length of the window.
- Secure a length of a DuPont™ RainVent™ Batten over the insect screen one inch away from the window.
- Fold the insect screen up and over the batten and staple up.
- Trim windows and doors as specified by manufacturer.

Base of Wall

Integrate an insect screen, following manufacturer's instructions, to help prevent insects or wind-driven debris from entering the venting cavity.

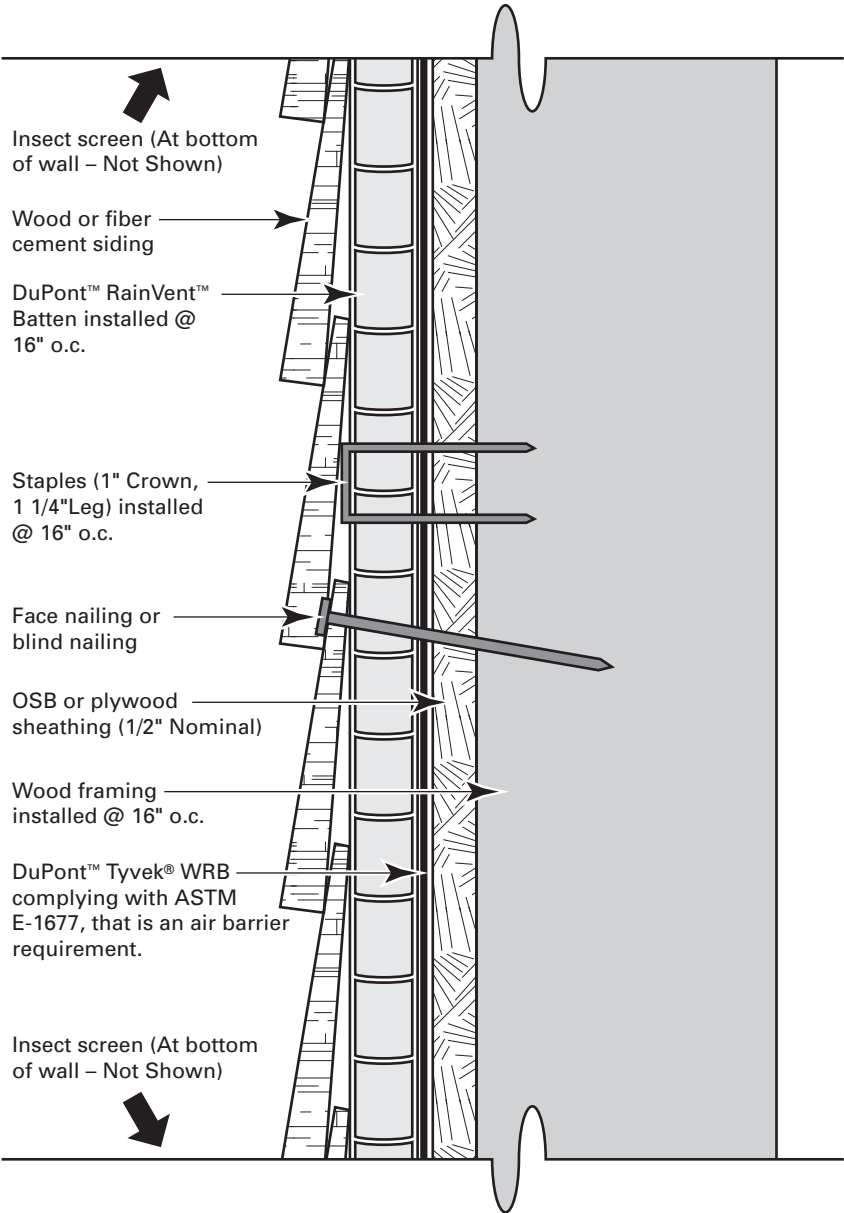
- Snap a line 2-1/2 inches above the bottom edge of the siding and attach a 6 inch strip of galvanized or fiberglass insect screen.
- Secure a length of DuPont™ RainVent™ Batten to base of wall running horizontally, along the top of the line, over-laying the insect screen.
- Fold the insect screen up and over the entire base assembly and staple up.
- When applying lap siding, place a second DuPont™ RainVent™ Batten over the first. This second layer is a furring layer to give the siding proper slope for the bottom course.
- Siding should overlap the entire base assembly by 1/2".

Top of Wall

Integrate an insect screen, following manufacturer's instructions, to help prevent insects or wind-driven debris from entering the venting cavity.

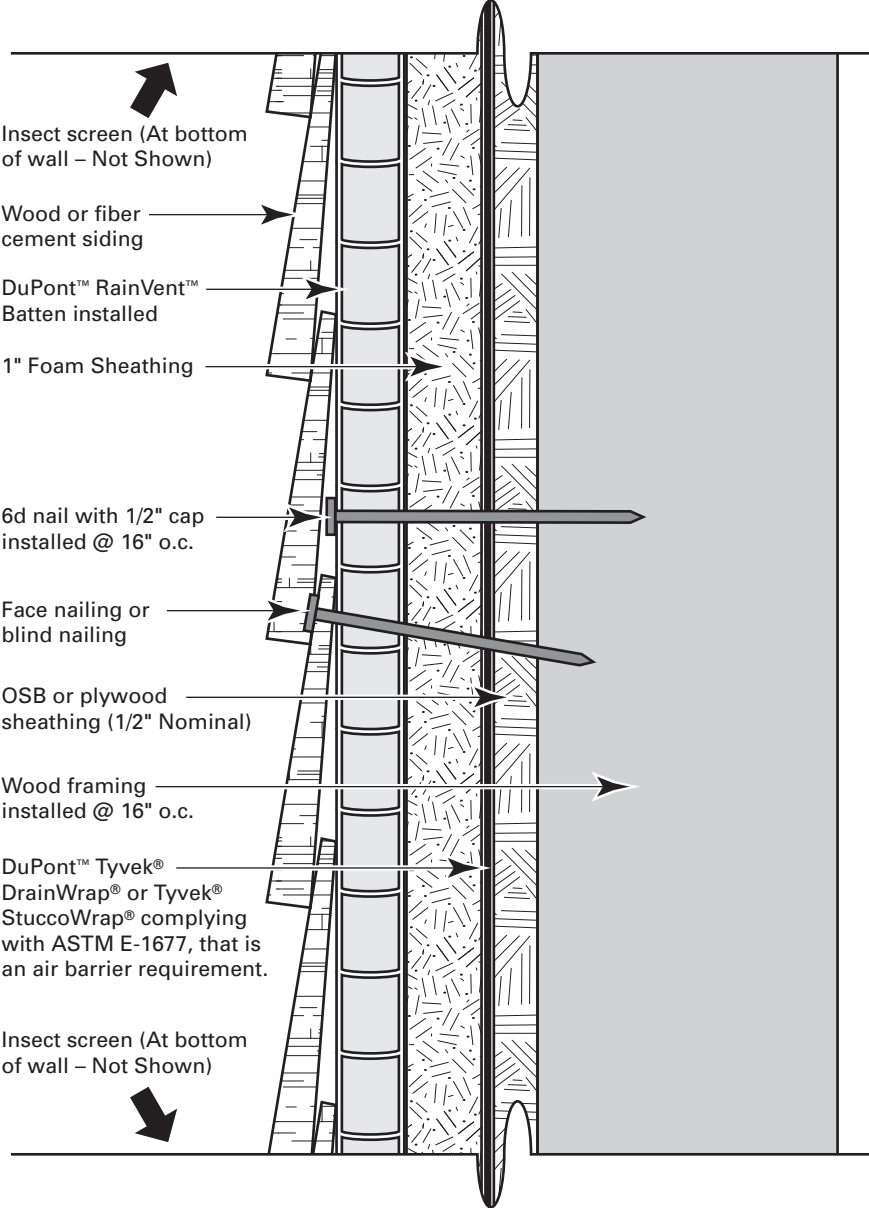
DuPont™ RainVent™ Batten Installation Guidelines

Diagram 1: DuPont™ RainVent™ Batten with 1/2" OSB or Plywood



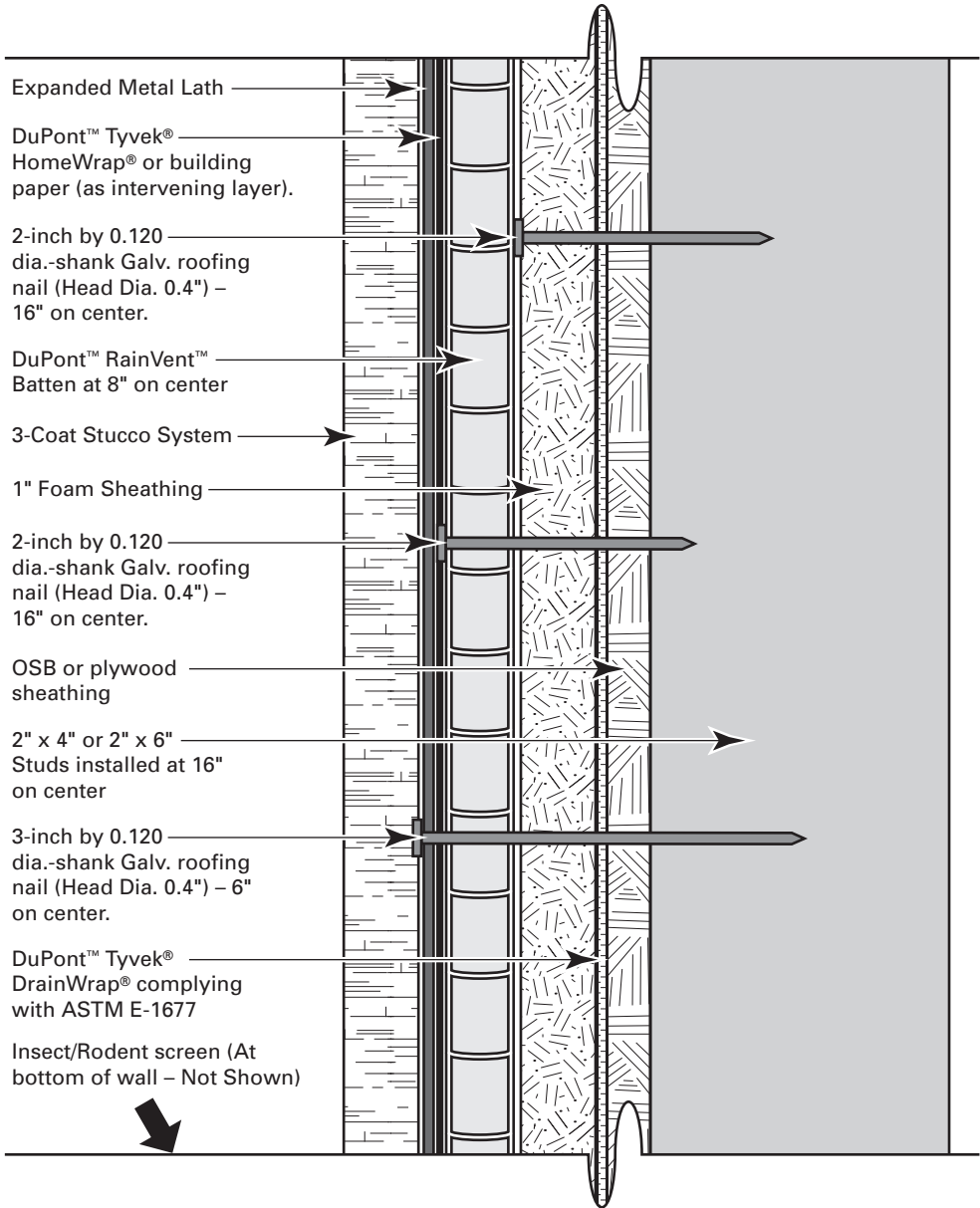
DuPont™ RainVent™ Batten Installation Guidelines

Diagram 2: DuPont™ RainVent™ Batten to 1/2" OSB or Plywood with Foam Sheathing



DuPont™ RainVent™ Batten Installation Guidelines

Diagram 3: DuPont™ RainVent™ Batten to 1/2" OSB or Plywood with Foam Sheathing and 3-Coat Stucco System



For more information about DuPont Weatherization Systems, please call 1-800-44-Tyvek or visit us at www.weatherization.tyvek.com

